



SRS Immobilization Solutions



Choosing an SRS Immobilization System



Encompass™ SRS Immobilization System

Pages 3–5



Solstice™ SRS Immobilization System

Pages 6–7

HyperArc™ Validated	Yes	No
SGRT Compatible	Yes	Yes
MR Safe Option	Yes	Yes
Thermoplastic Options	Open Face	Open or Closed Face
Thermoplastic Frame Size	1 (Standard)	2 (Standard or Narrow)
Mask Attachment Style	Integrated Shim™ Pins	Thermoplastic Clips
Posterior Head Support	Thermoplastic or Customizable Cushion	Customizable Cushion
Shim Option	Integrated in Frame, 0.5 mm increments	AccuForm™ Shim
Bite Positioner	IntegraBite™	Precise Bite™
Shoulder Thermoplastic	No	Yes
Corrective Pitch Capability	No	Yes
Embedded Fiducial	Yes	No
Contact	Qfix	CIVCO RT

Encompass™ SRS Immobilization System



Highly rigid, non-invasive immobilization device designed for precisely targeted treatment to the brain, head & neck.

Features & Benefits

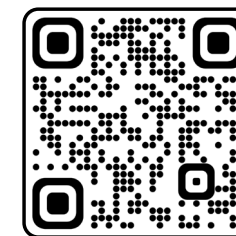
- Immobilization for treatment of multiple lesions with a single isocenter
- High precision immobilization with submillimetric accuracy for stereotactic radiosurgery, including trigeminal neuralgia
- Integrated Shim™ System optimizes workflow efficiencies
- Open View™ Thermoplastic can reduce patient anxiety and allows for intra-fraction positioning verification utilizing optical tracking systems
- Submillimetric immobilization with or without optional IntegraBite™



Encompass SRS Immobilization System is available in an MR-safe version.



Image used is courtesy from Varian, a Siemens Healthineers company



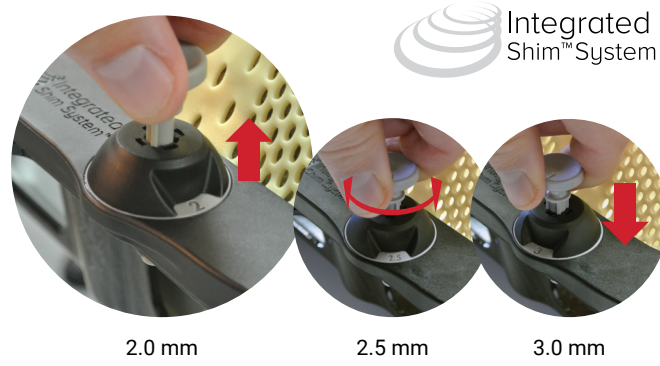
Scan the QR Code to view the "Benefits of using Encompass SRS Immobilization System" Video!

Encompass™ SRS Immobilization System



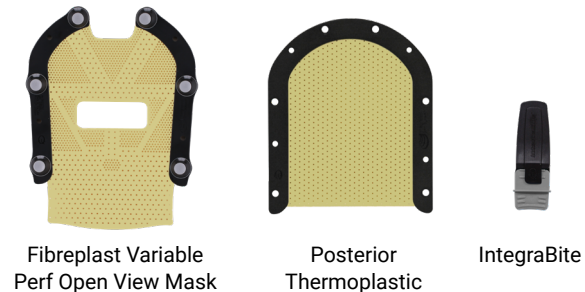
Integrated Shim™ System

- Allows independent height adjustment at each pin, providing completely customizable immobilization
- Each Integrated Shim can be adjusted in discrete 0.5 mm increments, with a total range of 4 mm
- Adjusting shim height is as easy as simply rotating the pin
- Eliminates the need for mask removal to adjust shim height
- Better workflow and instant setup feedback



Encompass SRS Fibreplast Masks

- Made from the most rigid thermoplastic material available, providing anterior and posterior cranial support
- Variable Perf™ Pattern maximizes rigidity while minimizing the bolus effect



IntegraBite™

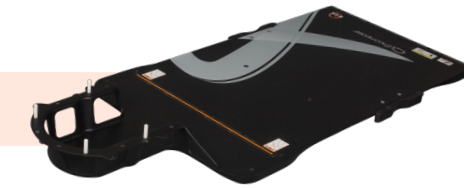
- Decreased head and neck rotation, flexion, and extension
- Repeatable positioning
- Simple, streamlined design makes application and insertion easy



Encompass™ Devices

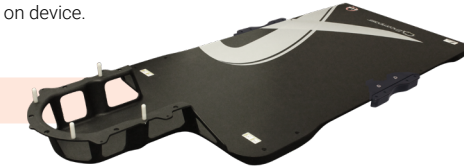
RT-4600-01 Encompass SRS Standalone Device

Device Length 1358 mm
Handling Weight 5.5 kg (12 lb)
Weight Limit 249 kg (550 lb), Uniformly Distributed Load at maximum cantilever position indicated on device.



RT-4600KV-01 kVue™ Encompass SRS Insert

Device Length 1311 mm
Handling Weight 4.5 kg (10 lb)
Weight Limit 249 kg (550 lb), Uniformly Distributed Load at maximum cantilever position indicated on device.



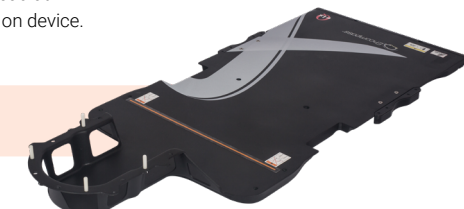
RT-4600-01-MRI Encompass SRS MR Standalone Device

Device Length 1358 mm
Handling Weight 5.5 kg (12 lb)
Weight Limit 249 kg (550 lb), Uniformly Distributed Load at maximum cantilever position indicated on device.



RT-4600-02 Encompass SRS Standalone Device

Device Length 1358 mm
Handling Weight 5 kg (11 lb)
Weight Limit 249 kg (550 lb), Uniformly Distributed Load at maximum cantilever position indicated on device.



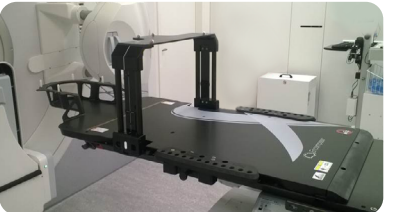
Encompass Headrest E0 Hand Grip Array

Included with all Encompass Devices



Direct Indexing™ Adapters

Available for indexing the standalone device to specific couch top models. Call for details.



Encompass SRS Standalone Device compatible with bridges

Encompass Thermoplastic Options

Option 1

RT-B889KYCF2 Encompass SRS Fibreplast® System with Optional IntegraBite

Validated for HyperArc™



SRS Headrests for Option 1

RT-4600-10 E0 SRS Headrest
Included with all Encompass Devices
Validated for HyperArc

RT-4600-12 E2 SRS Headrest
Safe to use with HyperArc

RT-4600-14 E4 SRS Headrest
Safe to use with HyperArc



Option 2

RT-B889KYCF2A Encompass SRS Anterior Only Fibreplast Mask to be used with SRS Cushion Support

Includes MOLD CARE™ U Head Cushion, 20 cm x 35 cm
Safe to use with HyperArc



SRS Cushion Support for Option 2

RT-4600-20 SRS Cushion Support
Safe to use with HyperArc



Solstice™ SRS Immobilization System



Variable pitch capability provides increased setup options in CT simulation, MR imaging (with glass fiber MR version) and corrective positioning flexibility during treatment setup



MR Series™ IMRT Reinforced Thermoplastics™

Features & Benefits

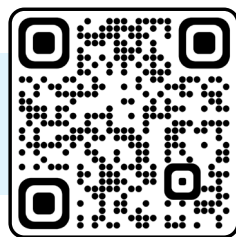
- Non-invasive immobilization with submillimeter accuracy for treatment of multiple lesions with a single isocenter
- Midline thermoplastic mask attachment provides increased rigidity and minimizes shrinkage to enhance patient comfort
- Highly conformal to the patient when using a customizable cushion and dedicated thermoplastic mask
- Unique thermoplastic frame provides easy to use, secure and quiet mask attachment
- Adaptable with Precise Bite™ to aid in effective and repeatable positioning



ClearVision™ Open-face (with Precise Bite) compatible with Vision RT's Align RT camera system



Shoulder Thermoplastic



Scan the QR Code to view product videos and learn more!

Solstice™ SRS Immobilization System Customization

The system is comprised of a carbon fiber head support, customizable cushion and dedicated thermoplastic mask designed for secure and simple attachment. These components create a highly customizable and comfortable head and neck immobilization system for precise treatment to improve patient outcomes.

SGRT Starter Kit

VISIONRT COMPATIBLE

Kit includes: Head Support (x1), Solstice ClearVision™ Open-face Thermoplastic, Standard (x10), 20 x 35 cm Chamfered AccuForm™ Cushion (x10), Precise Bite™ (x5).

CHS03SGK	Carbon Fiber, Posifix®
CHS04SGK	Carbon Fiber, Type-S™
CHS03MRSGK	Glass Fiber MR, Posifix
CHS04MRSGK	Glass Fiber MR, Type-S

Standard Starter Kit

Kit includes: Head Support (x1), Solstice IMRT Reinforced Thermoplastic™ Style 18, Standard (x10), 20 x 35 cm Chamfered AccuForm Cushion (x10), Precise Bite (x5).

CHS03K	Carbon Fiber, Posifix
CHS04K	Carbon Fiber, Type-S
CHS03MRK	Glass Fiber MR, Posifix
CHS04MRK	Glass Fiber MR, Type-S

Individual Order Items

Head Support

CHS03	Carbon Fiber, Posifix	
CHS04	Carbon Fiber, Type-S	
CHS03MR	Glass Fiber MR, Posifix	
CHS04MR	Glass Fiber MR, Type-S	

ClearVision™ Thermoplastic

MTAPCID1832SG	Standard (shown), Qty 5	
MTAPCIN1832SG	Narrow, Qty 5	

VISIONRT COMPATIBLE

IMRT Reinforced Thermoplastic™ Style 18

MTAPCID1832	Standard, Qty 5	
MTAPCIN1832	Narrow (shown), Qty 5	

Shoulder Thermoplastic

MTAPSSTS	Type-S Standard White, Solid (left), Qty 5
MTAPSPFF	Posifix Standard White, Solid (right), Qty 5



AccuForm™ Cushions

MTACL2035	20 x 35 cm Chamfered, Qty 1	
MTACL2035HF	20 x 35 cm Chamfered, Half Fill, Qty 1	

Precise Bite™

MTCBPBITE	Standard, Qty 5	
MTCBPBITES	Small, Qty 5	

Vision RT is unable to comment on, nor make claims, about the immobilization rigidity or patient alignment reproducibility when using this mask; compatibility is subject to users following CIVCO Radiotherapy and Qfix guidelines for forming open masks in conjunction with Surface Guided Radiotherapy Systems, and subject to users following Vision RT's guidelines for drawing Regions of Interest for use in SRS with Open Masks; the mask vendor is responsible for ensuring that users are in receipt of guidelines for forming masks for use in conjunction with Surface Guided Radiotherapy Systems. Vendors may change their guidelines from time to time without reviewing these changes with Vision RT. Vision RT is not liable for misuse of masks; Vision RT makes no comment on, and is not liable for, suitability or otherwise of masks for SRS or any other procedure; Purchasers are responsible for making their own choices as to the masks selected by them.

CIVCO RT Sales Office

Orange City, Iowa, USA
800.842.8688 | +1 712.737.8688
info@CivcoRT.com | www.CivcoRT.com

Qfix Sales Office

Avondale, Pennsylvania, USA
+1 610.268.0585
sales@Qfix.com | www.Qfix.com



Copyright ©2023. This brochure contains information about products which may or may not be available in particular countries. These products may not be licensed in accordance with Canadian law. Each country has specific laws and regulations governing the commercialization of medical devices and the communication of information regarding medical devices in printed and digital media. Products appearing in this brochure or on our website may or may not have received approval, clearance, or marketing authorization by a governmental regulatory body in any particular country, or may have received approval, clearance, or marketing authorization for different indications and restrictions in different countries, or may be for investigational use only. A product's appearance in this brochure should not be construed as a solicitation or promotion for said product, nor any indication which is not authorized by the laws and regulations of the country where the reader resides. Qfix and Fibreplast are registered trademarks of Qfix. HyperArc is trademark of Varian Medical Systems. MOLDCARE is a trademark of ALCARE Co, Ltd. Direct Indexing, Encompass, Integrated Shim, IntegraBite, kVue, Variable Perf, and Open View are trademarks of Qfix. CIVCO is a registered trademark of CIVCO Medical Solutions. Posifix is a registered trademark of Medtec LLC. AccuForm, CIVCO Radiotherapy, CIVCO RT, ClearVision, IMRT Reinforced Thermoplastic, Precise Bite, Solstice, trUpoint ARCH, Type-S, and Universal Couchtop are trademarks of Medtec LLC. All other trademarks are property of their respective owners.