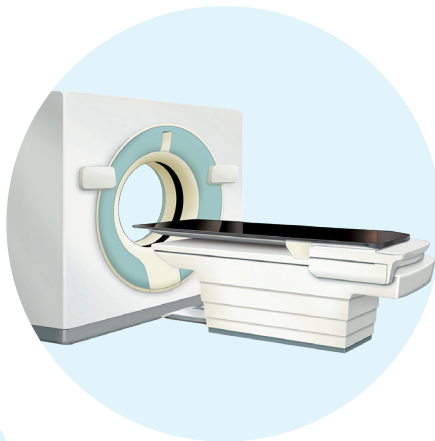


Universal Couchtop™

for safe, efficient treatment planning + imaging

 **Universal Couchtop™**
Long Extension

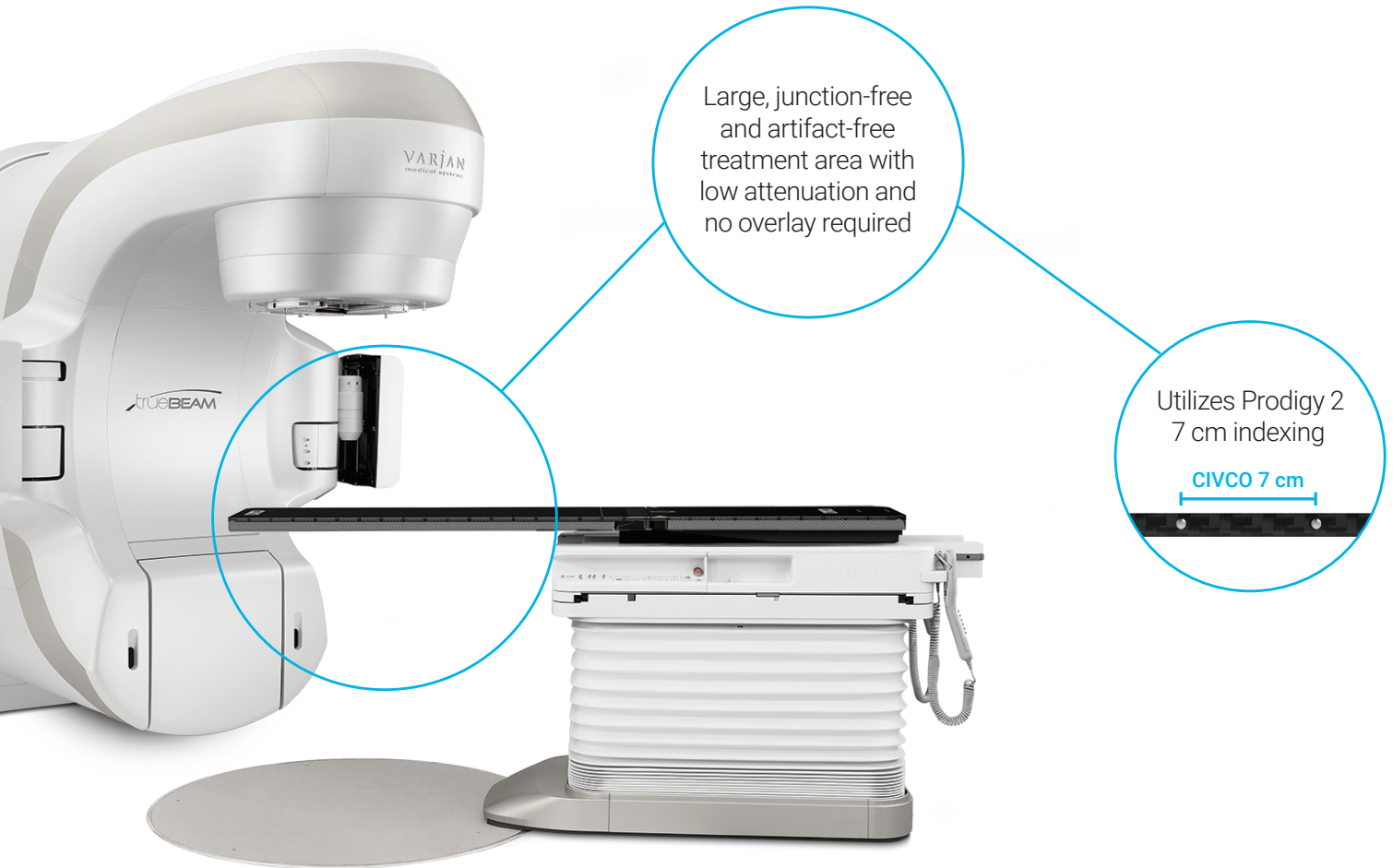


CIVCO®
Radiotherapy
a better way

Junction, Rail and Artifact-free



The Universal Couchtop™ is a modern and comprehensive solution for enabling advanced treatments in your clinic. Specifically designed to answer the demands of IGRT delivery, the Universal Couchtop Long Extension contains no rails or junctions in the treatment area to help facilitate better dose delivery and target coverage.



5 Year Warranty on Universal Couchtop



Self-locking extension seam located outside of treatment field



Convenient wall storage device for long extensions



“The implementation of UCT has allowed us to introduce kV and CBCT imaging on our treatment units. It is the preferred treatment unit for all complex patients including head and neck and lung treatments.”

- Aniko Cooper, Director of Radiation Therapy Services, North Queensland Oncology Service, Douglas, Australia

Extensions to Treat Many Disease Sites

Universal Couchtop™ allows full flexibility with many extension options to help facilitate patient imaging, simulation and treatment throughout the day. These extensions feature a unique profile allowing for direct attachment of CIVCO's positioning and immobilization solutions to treat many disease sites.

Rectangular

- Available standard or with an optional embedded wire to ensure patient alignment
- Options for Linac, Proton and CT

Type-S™

- Compatible with Type-S Thermoplastics, including FirmFit™ with SnapFrame™ Type-S and ClearVision™ open face masks designed for use with vision/camera systems
- Compatible with Solstice SRS Immobilization System

Posifix®

- Compatible with Posifix Thermoplastics and trUpoint ARCH SRS/SRT System
- Compatible with Solstice™ SRS Immobilization System

ProForm™

- Unique head & neck patient immobilization solution for proton therapy

Kevlar

- Compatible with Varian's Calypso® System

Grid

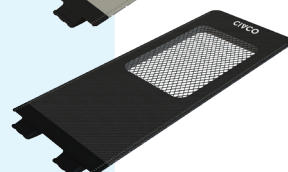
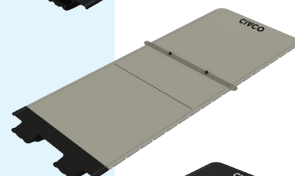
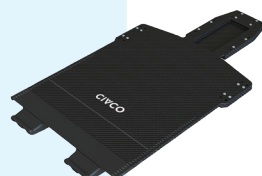
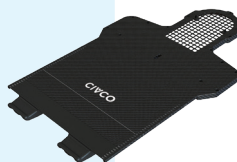
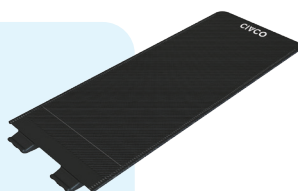
- Helps minimize surface dose and skin reactions

UCT Head

- Extends the patient an additional 17 cm

End Plates for Varian

- Allows the use of various QA devices



Body Pro-Lok ONE™

Body Pro-Lok™



Solstice™
SRS Immobilization System



Type-S™ & Posifix®

Please contact your sales representative to learn more about CIVCO's Extension options available specifically for your facility's Linac, Proton or CT models.

Specific Universal Couchtop Long Extensions have been validated on TrueBeam™ and VitalBeam™. CIVCO positioning and immobilization devices have not been validated with TrueBeam or VitalBeam and Varian is not liable for use of these products. Universal Couchtop has not been validated on HyperArc™ or Edge™.

Dosimetrically Matched Universal Couchtops™



Universal Couchtop is available in dosimetrically matched* couchtops for most major CT, Linac and Proton models to provide seamless transition from simulation to treatment.

Reduce set-up and treatment errors

Installing Universal Couchtop on all department pedestals will offer the same:

- Dose attenuation
- Deflection
- 7 cm Indexing
- Immobilization device attachment

Scan or treat patients on matching couchtops

Installing matching couchtops allows patients to be scanned or treated on any Linac, CT or proton model as required. This is ideal when machines are down or departments are trying to manage patient throughput.

VARIAN **IBA** **PHILIPS** **CANON** **HITACHI**
ELEKTA **GE** **SIEMENS** **FUJIFILM** **MEVION**

Universal Couchtop 1 Piece



The Universal Couchtop 1 Piece is an ideal IGRT and SBRT solution with a uniform design and no junctions. This couchtop offers a dosimetrically matched couchtop for most major CT and Linac models.

- No extension or seams
- Low attenuation and surface dose
- Economic option for facilities with multiple linear accelerators and CTs
- Allows for attachment of Body Pro-Lok™ SBRT bridges and accessories for SBRT Immobilization
- Utilizes Prodigy™ 2 indexing at 7 cm increments



*Contact your sales representative for more information.

“CIVCO’s dosimetrically matched Universal Couchtops give us more confidence in dose calculations when planning patients who will be treated on the linac. Not having to use overlays has definitely provided us additional conveniences.”

- Brian Smaga, Radiation Therapist, Agnesian Healthcare, Fond Du Lac, Wisconsin

“One can minimize or even eliminate the effort needed to model the couch by installing matching couch tops in the CT simulator and linear accelerator.”

- AAPM Task Group 176

UCT LE Statistics

Load Rating

Entire System: 220 kg/484 lbs
 Extension Only: 178 kg/392 lbs

Attenuation

Rectangular Extension Location: Center of Extension	6MV (10 x 10)
MTIL6660	2.7
MTIL6669	2.7

Surface Dose

	6MV 10 x 10	6MV 20 x 20	18MV 10 x 10	18 MV 20 x 20
Open Field	19.1%	30.5%	16.1%	20.6%
UCT LE	94.1%	97.2%	69.9%	79.4%
Posi Extension P1	82.6%	89.7%	56.9%	69.4%
Posi Extension P2	89.6%	93.2%	64.6%	73.6%



Proton Water Equivalency (WET)

	R80
Rectangle MTIL6673 & MTIL6676	8.2 mm
Rectangle MTIL6660	7.4 mm
ProForm MTIL6675	7.4 mm

Attenuation, surface dose and WET values are approximate due to variation in machine characteristics.

UCT 1 Piece Statistics

Load Rating

Entire System: 200 kg/444 lbs

Attenuation

1 Piece Location: Center of Extension	6MV (10 x 10)
	2.7

Surface Dose

	6MV 10 x 10	6MV 20 x 20	18MV 10 x 10	18 MV 20 x 20
Open Field	19.1%	30.5%	16.1%	29.6%
UCT 1 Piece	94.1%	97.2%	69.9%	79.4%

Deflection

- The Universal Couchtop Long Extension contributes less than 1 mm of deflection to the system following IEC 60976 (2007) Section 15.2.2
- The Universal Couchtop 1 Piece meets the deflection standards and requirements of IEC 60976 (2007) Section 15.2.2 on the Varian Exact® couch

Please visit www.CivcoRT.com for additional Technical Data Information.



CIVCO

Radiotherapy



Global Sales Office
1401 8th Street SE
Orange City, IA 51041, USA
800.842.8688 | +1 712.737.8688
info@CivcoRT.com | www.CivcoRT.com

COPYRIGHT © 2019. CIVCO AND POSIFIX ARE REGISTERED TRADEMARKS OF CIVCO MEDICAL SOLUTIONS.
BODY PRO-LOK, BODY PRO-LOK ONE, CLEARVISION, DOSEMATCH TECHNOLOGY, FIRMFIT, PRODIGY, PROFORM,
SNAPFRAME, SOLSTICE, TRUPOINT ARCH, TYPE-S AND UNIVERSAL COUCHTOP ARE TRADEMARKS OF CIVCO. ALL
OTHER TRADEMARKS ARE PROPERTY OF THEIR RESPECTIVE OWNERS. ALL PRODUCTS MAY NOT BE LICENSED IN
ACCORDANCE WITH CANADIAN LAW. 2016P1108 REV. E