



*Symphony<sup>®</sup>*

**Positioning &  
Transfer Solutions**

Powered by

*AirDrive*  
TECHNOLOGY



positioning  
patients for life.<sup>®</sup>

[www.Qfix.com](http://www.Qfix.com)

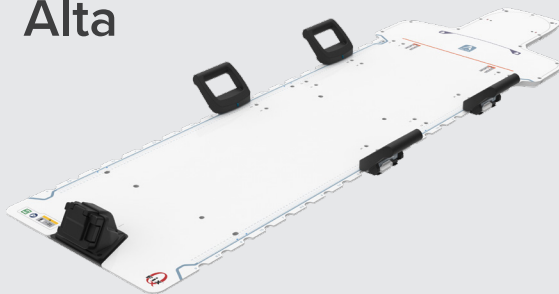
# Design your own Symphony® Solution

*AirShuttle*™ + *AirDrive*™

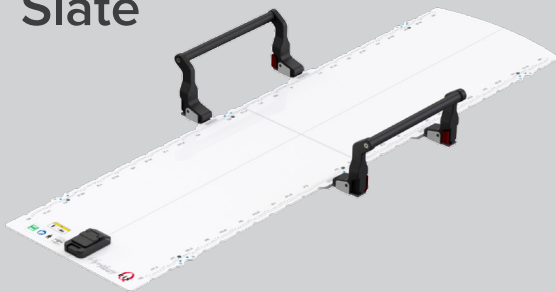
Lithotomy



Alta



Slate™



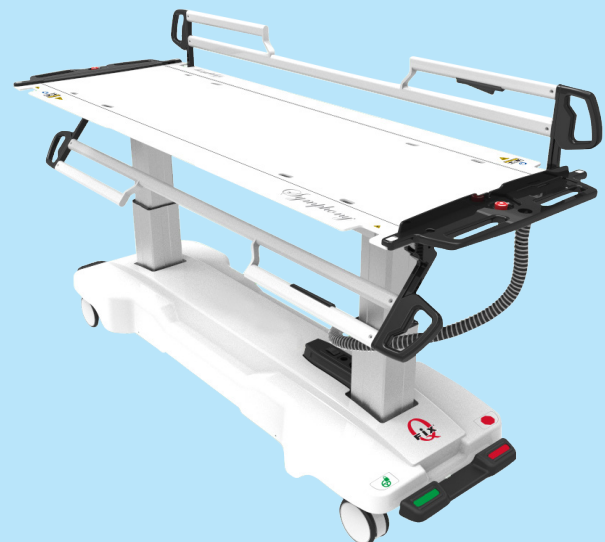
BoS™



Caddie

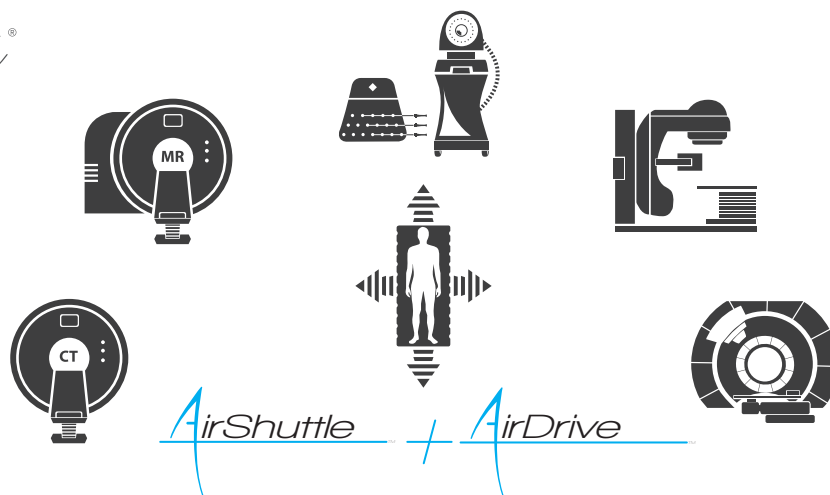


Trolley



# Symphony<sup>®</sup>

Position your patient once and go from one modality to the next without having to perform additional setups.



A Symphony solution combines an AirShuttle positioning & transfer device with an AirDrive system to provide smooth patient transfers for imaging and treatment applications. AirShuttle Devices and AirDrive Systems can be used in imaging modalities including CT, X-Ray, ultrasound, fluoroscopy, MRI (up to 3 Tesla), and radiation therapy treatment environments including brachytherapy.

- Safely transfer your patient with minimal clinical staff
- Transfer on and off a wide variety of surfaces including sheet-covered pads and mattresses
- Suitable for use in MRI

## AirShuttle<sup>™</sup>

Available for numerous therapeutic applications and are compatible with a wide variety of existing patient positioning and immobilization accessories (when required). Low attenuation and excellent homogeneity result in superior imaging, simulation, and treatment.

### Brachytherapy and Lithotomy

**Lithotomy** solution accommodates blade mounted stirrups for improved treatment site access.

### External Beam: Photon and Proton

**Alta** is a feature-rich, all-in-one solution that adapts to a variety of clinical setups on a single device.

**Slate** offers a customizable platform for your imaging and treatment needs.

**BoS** positions your patient for head and neck imaging and proton treatment.

## AirDrive<sup>™</sup>

Provide ample power to transport and transfer patients in a variety of clinical settings, even for the busiest centers. The robust transfer technology enables patient transfer, even over gaps and uneven surfaces.

**AirDrive Caddie** provides optimum transfer performance in a small package. It can be used with most commercially available trolleys and stretchers.

**AirDrive Trolley** is specially designed to transport and transfer your patients for a variety of workflows. It can also be used as a procedural table and as a recovery bed.



# Lithotomy *AirShuttle*™

## Maximize Workflow Flexibility

The patient is positioned once on the Lithotomy AirShuttle prior to insertion and then transferred easily, safely, and stably for imaging, treatment, and recovery.



**RT-5100-05**  
*Lithotomy AirShuttle*

## Simplified Workflow & Improved Experience

- Integrated surgical rails are compatible with CT and MR imaging and allow stirrups, steppers, and other accessories to be quickly attached.
- The leg extension supports the patient's legs for transfers and imaging and is easily removed to provide access to the perineum.
- The device provides stable patient support and reduced patient motion during transfers.
- Clinicians report reduced applicator motion and improved patient comfort when using AirDrive technology over conventional patient transfers.
- Patient transfers are performed by only two people, reducing staffing needs and allowing team members to focus on other responsibilities.
- Removable, cleanable pads on the transfer device provide patient comfort.

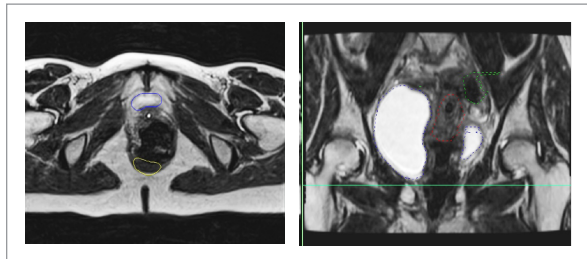


Lithotomy AirShuttle with AirDrive Caddie

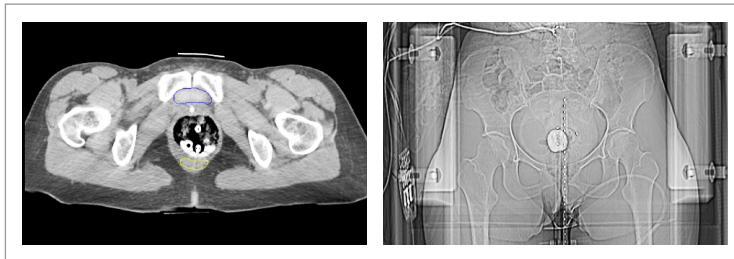


Lithotomy AirShuttle with AirDrive Trolley

## MR & CT Images Using Lithotomy AirShuttle



No artifact MR images.



Low-artifact CT images.

# Typical Brachytherapy Workflow

## Insert



The patient is prepped for insertion directly on the Lithotomy AirShuttle. Once the patient is positioned in the stirrups, the leg extension is removed to gain access to patient anatomy. After insertion, patient can be easily transferred and transported with an AirDrive system.

## Image



AirShuttle devices and AirDrive systems are compatible with MR, CT, and other X-ray environments. The patient is imaged directly on the Lithotomy AirShuttle.

## Transfer



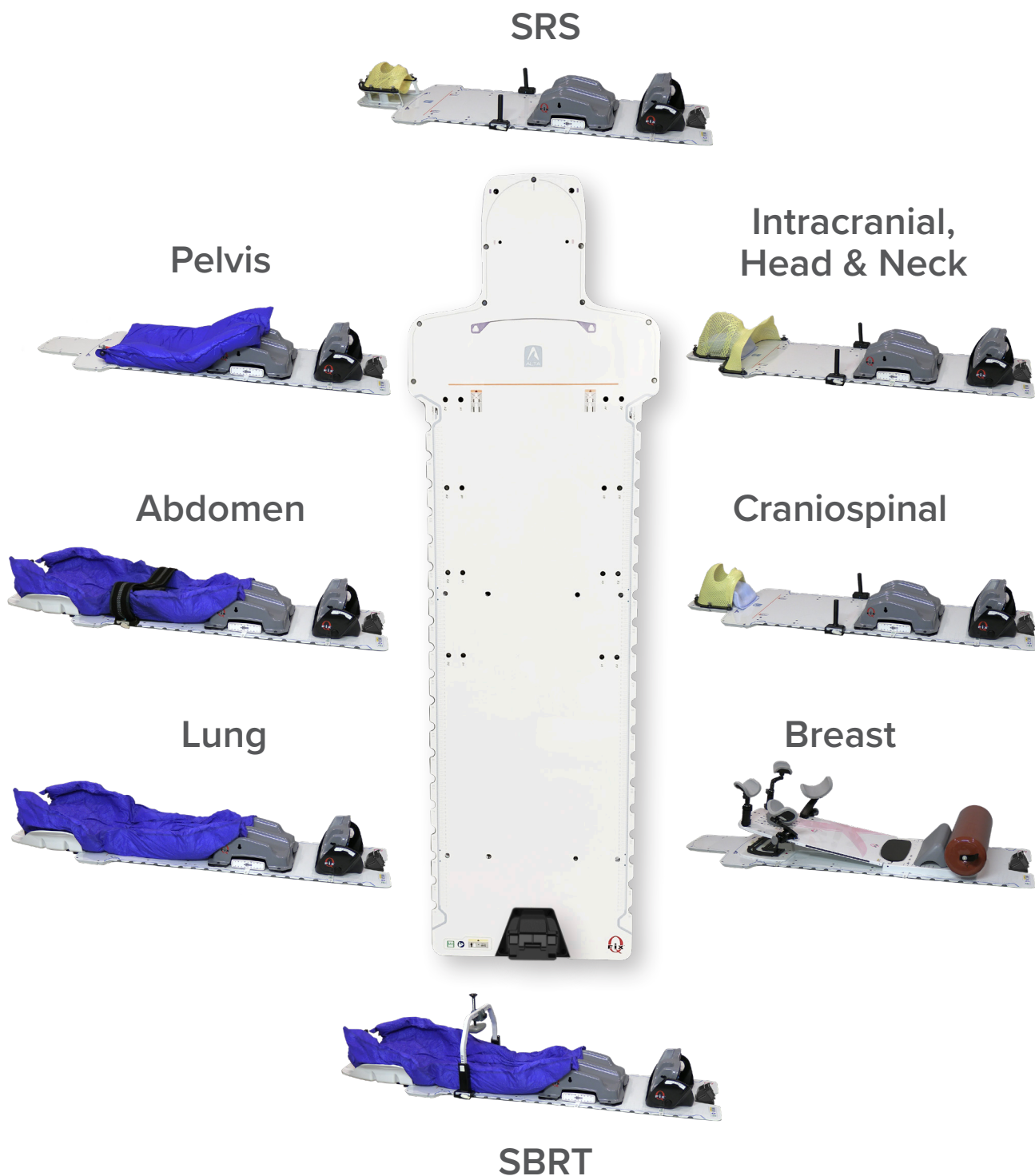
The AirDrive system safely transfers patients without repositioning. Patient stability and smooth transfer minimize movement of soft tissues and applicators.

## Treat



The patient is then treated on the Lithotomy AirShuttle, which has been the transfer platform during the entire workflow.

Quickly Adapts to a Variety of Clinical Treatments



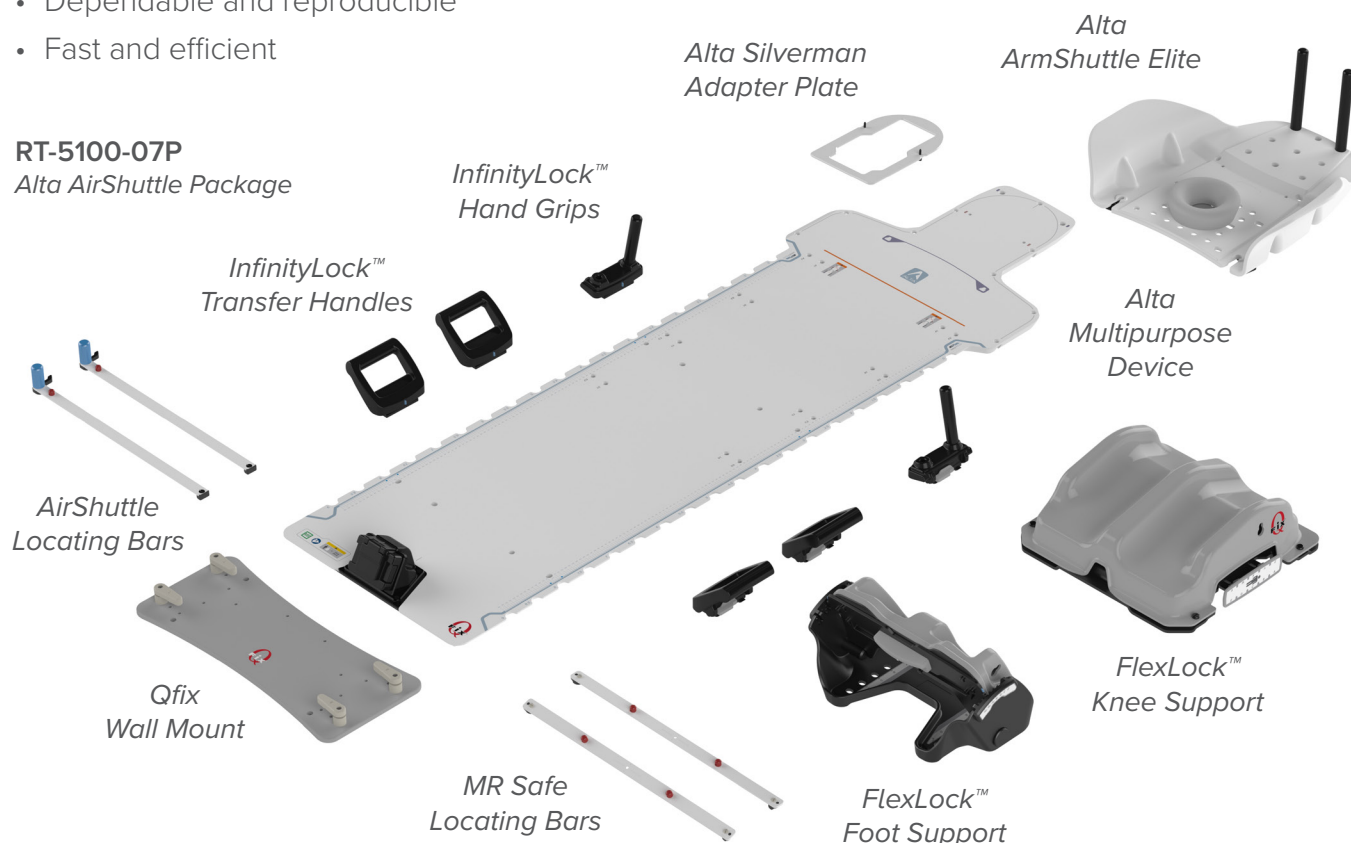
## Elevate Your Workflow Efficiencies to a Whole New Level

All-in-one solution can be used for a wide range of indications to reduce setup times.

- Combines functionality of multiple devices
- Can be extended beyond end of couch top
- Dependable and reproducible
- Fast and efficient

### RT-5100-07P

Alta AirShuttle Package



### Example Accessories



#### RT-4558CB03

ZiFix Traverse Abdominal/Thoracic Motion Control Systems

### InfinityLock Compression Bridges

#### RT-4800-B1

InfinityLock SBRT Compression Bridge  
Small (min: 30 cm & max: 38 cm)\*

#### RT-4800-B2

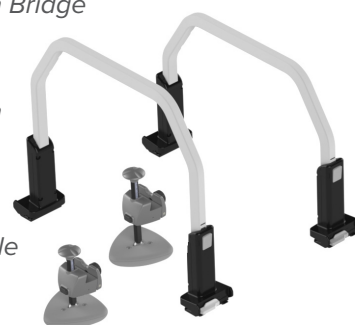
InfinityLock SBRT Compression Bridge - Large  
(min: 39 cm & max: 48 cm)\*

#### RT-4558KV4-01

Low Profile Compression Paddle

#### RT-4558KV4

Compression Paddle





# Slate *AirShuttle*

## Our Thinnest and Lightest AirShuttle

Features low attenuation and homogeneity for enhanced imaging and treatment. It can be used in conjunction with existing positioning and immobilization devices, further improving workflow efficiencies.



**RT-5100-01**  
*Slate AirShuttle*



## Example Accessories



**RT-4700-03**  
*INSIGHT™ MRI*  
Coil Holders



**RT-4800-FS**  
*FlexLock Foot Support*  
**RT-4800-KS**  
*FlexLock Knee Support*



**RT-4517-230120T80F90**  
*VacQfix™ Cushion, Whole*  
*Body for SBRT treatments*  
*Visit [Qfix.com](http://Qfix.com) for more*  
*information and complete*  
*selection of VacQfix cushions.*



**RT-5100-11**  
*AirShuttle Locating Bars*



**RT-4551BARMRI**  
*MR Locating Bars*





## Designed for Proton Therapy

The conformal shape of the device optimizes the penumbra and minimizes the blockage of important proton beam angles.



**RT-5100-04**  
*BoS AirShuttle*



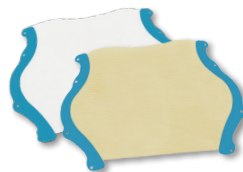
## Example Accessories



**RT-4490BOS1**  
*Foam Headrest*



**RT-4485**  
*Precut Foam Shim  
for BoS Headframe*



*BoS Masks*  
*Visit [Qfix.com](http://Qfix.com) for sizes  
and descriptions*



**RT-5100-11**  
*AirShuttle Locating Bars*



**RT-4551BARMRI**  
*MR Locating Bars*

# Symphony® and Your Workflow

## Patient Positioning and Transport

The patient is precisely positioned on the transfer device prior to being transported directly to imaging or treatment, saving valuable time and resources.



## Transfer Patient for Simulation

The immobilized patient is transferred using AirDrive technology onto the imaging table.



## Transfer Patient for External Beam Treatment

The immobilized patient is transferred into an indexed position onto the treatment couch top.



# Symphony<sup>®</sup> Packages



## Lithotomy AirShuttle Package with AirDrive Trolley RT-5100-500

Included Accessories:

- (2) AirShuttle Transfer Handles
- (1) Brachytherapy Insertion Overlay
- (1) Lithotomy Air Bearing (Spare)
- (1) IV Pole



## Lithotomy AirShuttle Package with AirDrive Caddie RT-5100-500S

Included Accessories:

- (2) AirShuttle Transfer Handles
- (1) Lithotomy Air Bearing (Spare)

### Lithotomy Accessories

**RT-5100-51ST**  
Stirrups (pair)

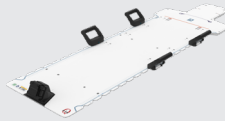


**RT-5100-51CU**  
SpringLoc Clamp, US (each)

**RT-5100-51CE**  
SpringLoc Clamp, Europe (each)



## Alta AirShuttle Package with AirDrive Trolley RT-5100-700



Accessories included with both Alta packages:

- |                                   |                              |
|-----------------------------------|------------------------------|
| (4) InfinityLock Transfer Handles | (1) FlexLock Foot Support    |
| (1) Alta AirShuttle Elite         | (2) MR Safe Locating Bars    |
| (1) Silverman Pin Adapter         | (2) AirShuttle Locating Bars |
| (2) InfinityLock Handgrips        | (1) Alta Air Bearing (Spare) |
| (1) FlexLock Knee Support         | (1) Wall Mount               |

## Alta AirShuttle Package with AirDrive Caddie RT-5100-700S

## BoS AirShuttle Package with AirDrive Trolley RT-5100-400



Accessories included with both BoS packages:

- (2) AirShuttle Transfer Handles
- (2) AirShuttle Locating Bars
- (1) BoS Air Bearing (Spare)

## Bos AirShuttle Package with AirDrive Caddie RT-5100-400S

## Slate AirShuttle Package with AirDrive Trolley RT-5100-100



Accessories included with both Slate packages:

- (2) AirShuttle Transfer Handles
- (2) AirShuttle Locating Bars
- (1) Slate Air Bearing (Spare)

## Slate AirShuttle Package with AirDrive Caddie RT-5100-100S



# Symphony<sup>®</sup> AirShuttle<sup>™</sup> + AirDrive<sup>™</sup>

Watch these videos to learn more!



## Lithotomy AirShuttle with AirDrive Trolley



## Lithotomy AirShuttle with AirDrive Caddie



## External Beam with AirDrive Trolley



2007557\_EN\_G

This brochure contains information about products which may or may not be available in particular countries. Each country has specific laws and regulations governing the commercialization of medical devices and the communication of information regarding medical devices in printed and digital media. Products appearing in this brochure or on our website may or may not have received approval, clearance, or marketing authorization by a governmental regulatory body in any particular country, or may have received approval, clearance, or marketing authorization for different indications and restrictions in different countries, or may be for investigational use only. A product's appearance in this brochure should not be construed as a solicitation or promotion for said product, nor any indication which is not authorized by the laws and regulations of the country where the reader resides. Symphony and BoS are registered trademark of Qfix. Alta, AirShuttle, Slate AirShuttle, Lithotomy AirShuttle, AirDrive Trolley, AirDrive Caddie, AirDrive, InfinityLock, FlexLock, VacQfix, INSIGHT, ZiFix Traverse are trademarks of Qfix. SpringLoc is a trademark of SchureMed. AirShuttle Devices, AirDrive Trolley, and AirDrive Caddie products or their accessories or components are patented or patent(s) pending in the US and/or elsewhere by Qfix or licensed by Qfix. This list may not be all inclusive.



Qfix  
440 Church Road  
Avondale, PA 19311  
[www.Qfix.com](http://www.Qfix.com)  
+1 800.526.5247  
[sales@Qfix.com](mailto:sales@Qfix.com)